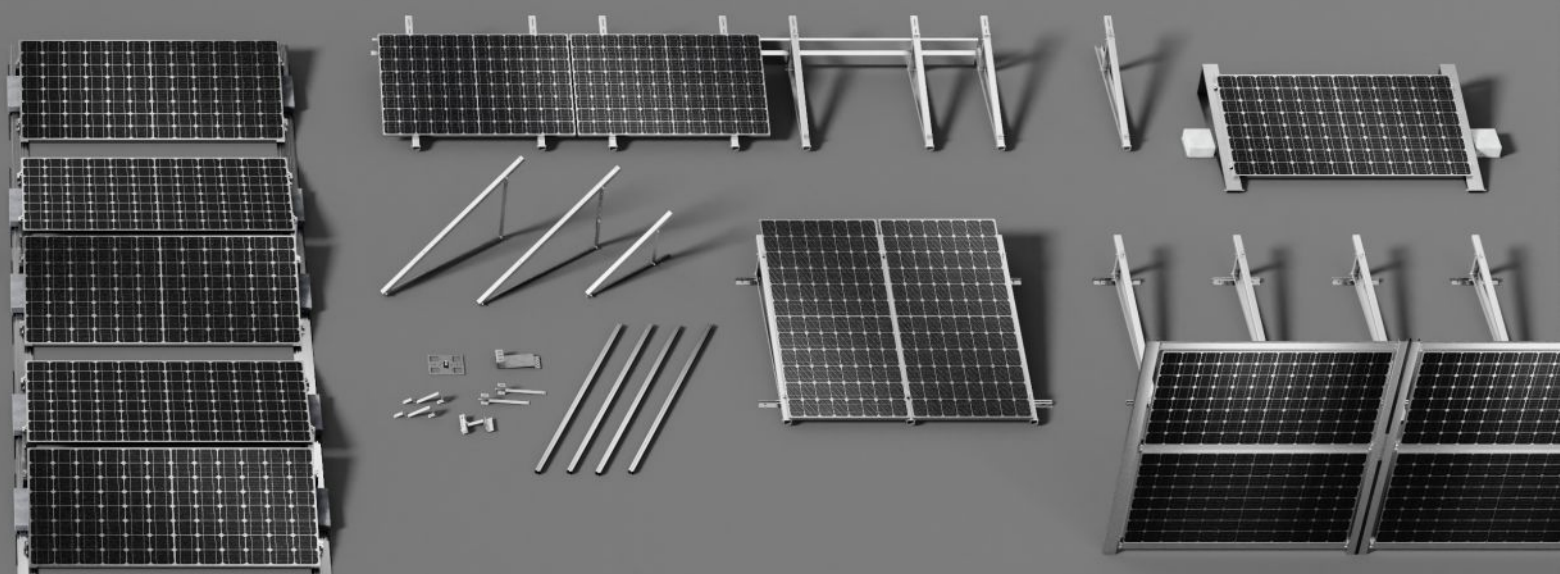


 **Hetmaniok**

# MOUNTING STRUCTURES FOR PHOTOVOLTAICS

PRODUCTS CATALOGUE 2025





ISO 900  
EN ISO 1090  
EN ISO 3834 2

📍 **W&H Sp. z o.o.**

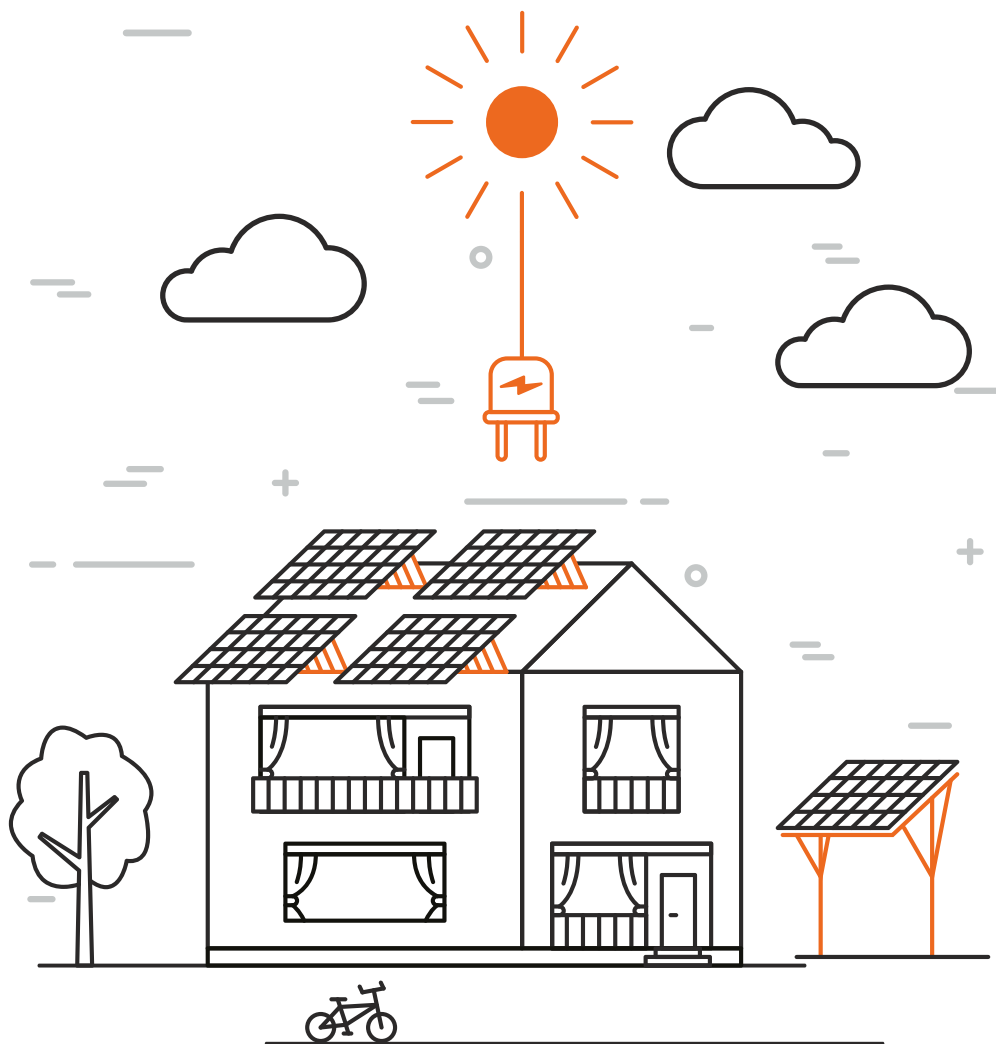
ul. Kościuszki 49,  
44-351 Turza Śląska,  
Poland

☎ +48 791 730 721

✉ oferta@hetmaniok.pl

🖱 hetmaniok.pl

# PRODUCTS CATALOGUE

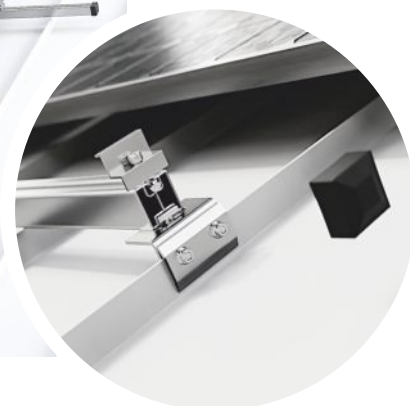


MOUNTING STRUCTURES  
FOR PHOTOVOLTAICS

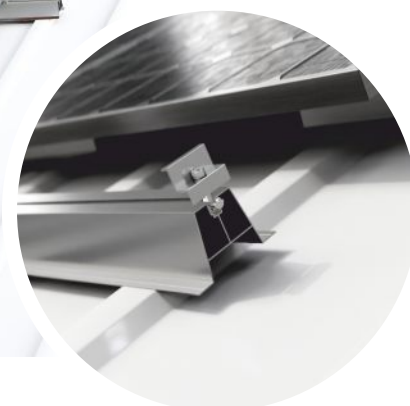
W&H Sp. z o. o.

# STRUCTURES FOR A PITCHED ROOF

- ▶ Modules: from 2
- ▶ TÜV Certificate



**STANDING SEAM ROOF**

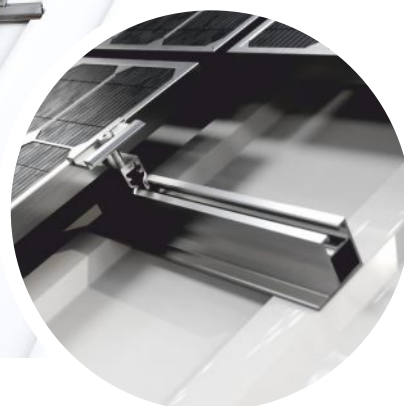


**TRAPEZOIDAL SHEET**



**TRAPEZOIDAL SHEET, CLICK SYSTEM, HORIZONTAL**

The most common roof in Poland is the pitched roof. Photovoltaic panels can also be mounted on this type of roof. The basis for such an installation is an appropriate design, and in particular a solution that enables effective fixing depending on the roof covering.



**TRAPEZOIDAL SHEET, CLICK SYSTEM, VERTICAL**



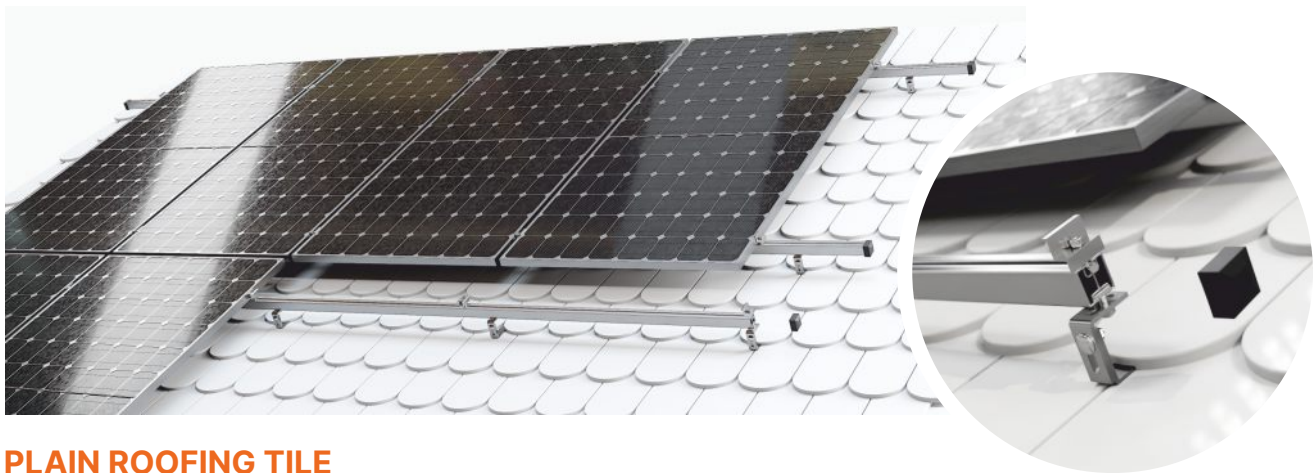
**BITUMEN ROOFING TILE**



**BITUMEN ROOFING TILE, DUAL THREAD SCREW**



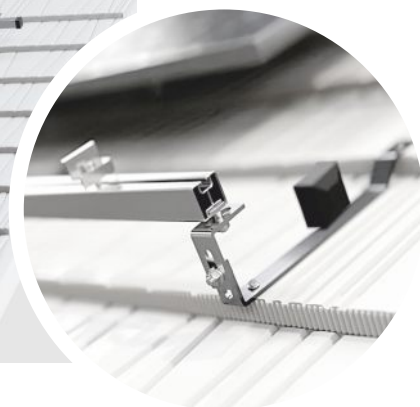
**CERAMIC/CONCRETE ROOFING TILE**



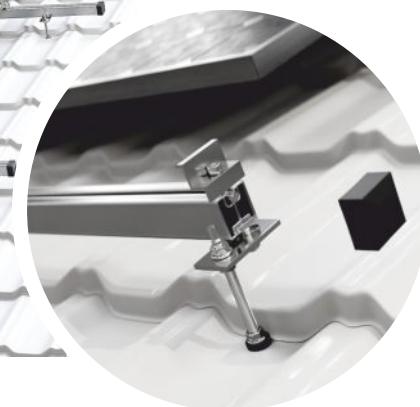
**PLAIN ROOFING TILE**



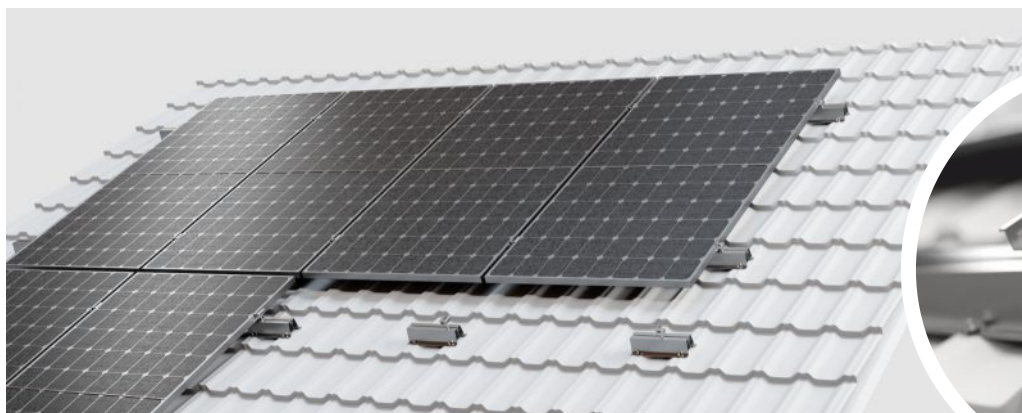
**METAL ROOFING TILE, ADJUSTABLE CLAMP**



**METAL ROOFING TILE „JANOSIK”, ADJUSTING CLAMP**



**METAL ROOFING TILE, DUAL THREAD SCREW**



**METAL ROOFING TILE, TRAPEZOIDAL BRIDGE CONSTRUCTION**

W&H Sp. z o. o.

# STRUCTURES FOR A FLAT ROOF

▶ Modules: from 1  
▶ TÜV Certificate



Photovoltaic installations mounted on a flat roof require the use of construction in such a way as to achieve the optimal angle of incidence of sunlight relative to photovoltaic cells. Our offer includes systems based on:

- low and high support,
- aluminium triangles for invasive and non-invasive installation



**AERO BALLAST STRUCTURE, SOUTH**



**AERO BALLAST STRUCTURE, EAST/WEST**



**BALLAST STRUCTURE, SOUTH**



**BALLAST STRUCTURE,  
EAST/WEST**



**ADHESIVE STRUCTURE,  
SUPPORTS**

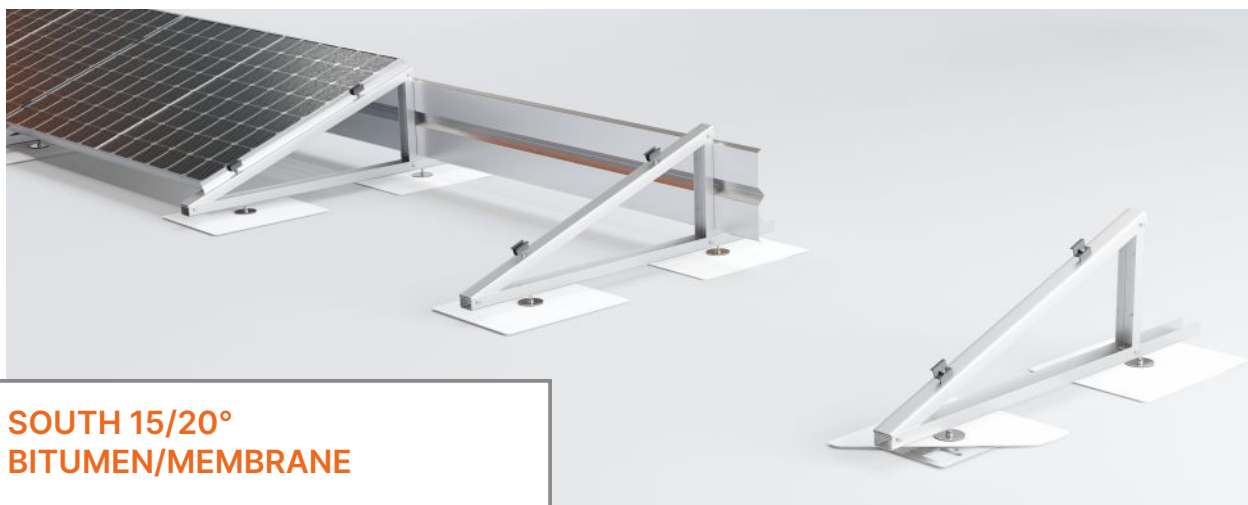


**SUPPORT STRUCTURE  
ON AERO RAILS**

STRUCTURES FOR A FLAT ROOF

# MAGNELIS TRIANGLE

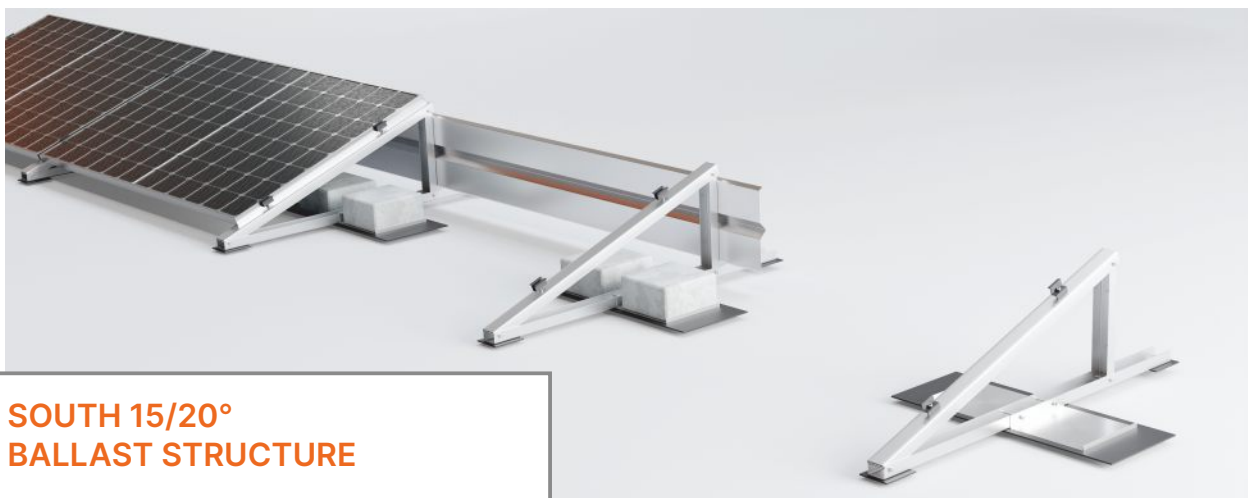
- ▶ Modules: from 1
- ▶ TÜV Certificate



**SOUTH 15/20°  
BITUMEN/MEMBRANE**



**SOUTH 15/20°  
DUAL THREAD SCREW**



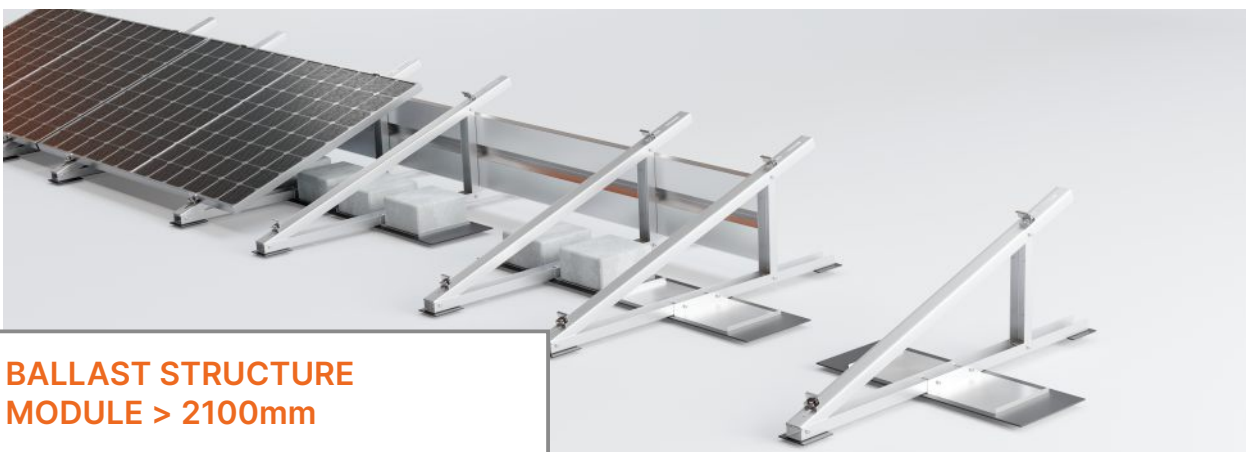
**SOUTH 15/20°  
BALLAST STRUCTURE**



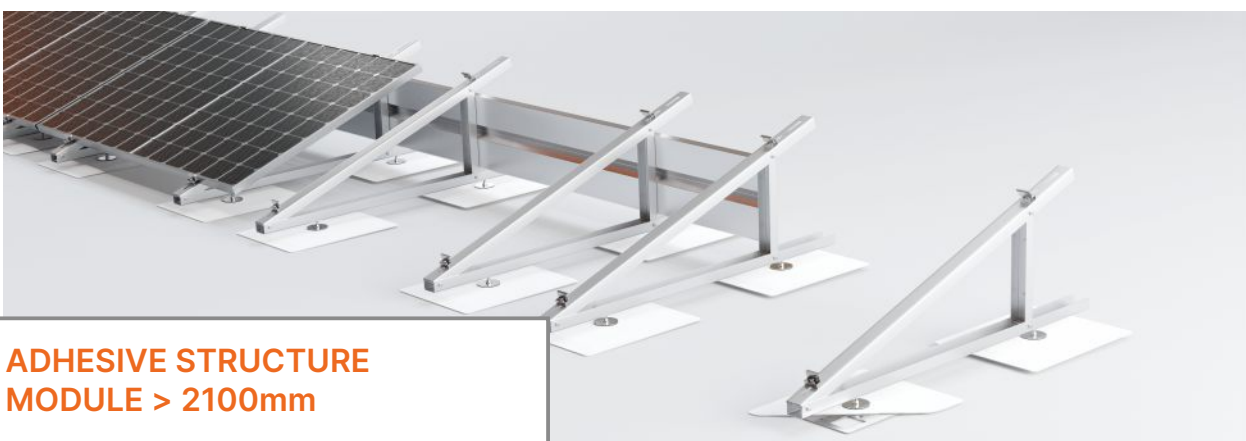
**SOUTH 15/20°  
ROOF SANDWICH PANELS**



**SOUTH 15/20° BIFACIAL  
ROOF SANDWICH PANELS**



**BALLAST STRUCTURE  
MODULE > 2100mm**



**ADHESIVE STRUCTURE  
MODULE > 2100mm**



**ADHESIVE STRUCTURE  
WIDE MAGNELIS TRIANGLE**



**ADHESIVE STRUCTURE EAST/WEST  
WIDE MAGNELIS TRIANGLE**



**BALLAST STRUCTURE  
WIDE MAGNELIS TRIANGLE**



**BALLAST STRUCTURE  
WIDE MAGNELIS TRIANGLE 10°**





**BALLAST STRUCTURE EAST/WEST  
WIDE MAGNELIS TRIANGLE**



**BALLAST STRUCTURE EAST/WEST  
WIDE MAGNELIS TRIANGLE MONORAIL**



**STRUCTRE ON AERO RAILS  
WIDE MAGNELIS TRIANGLE**



**STRUCTRE ON AERO RAILS  
MODULE > 2100mm**



**GREEN ROOF, STRUCTURE WIDE MAGNELIS TRIANGLE, SOUTH**



**GREEN ROOF, STRUCTURE WIDE MAGNELIS TRIANGLE MODULE >2100mm**



**GREEN ROOF, STRUCTURE MAGNELIS TRIANGLE, SOUTH**



**GREEN ROOF, STRUCTURE MAGNELIS TRIANGLE, SOUTH, MODULE >2100mm**

STRUCTURES FOR A FLAT ROOF

# MAGNELIS TRIANGLE

- ▶ Modules: from 2
- ▶ TÜV Certificate



**2 ROWS, SOUTH 15/20°  
BITUMEN/MEMBRANE**



**2 ROWS, SOUTH 15/20°  
DUAL THREAD SCREW**



**2 ROWS, SOUTH 15/20°  
BALLAST STRUCTURE**

STRUCTURES FOR A FLAT ROOF

# MAGNELIS TRIANGLE

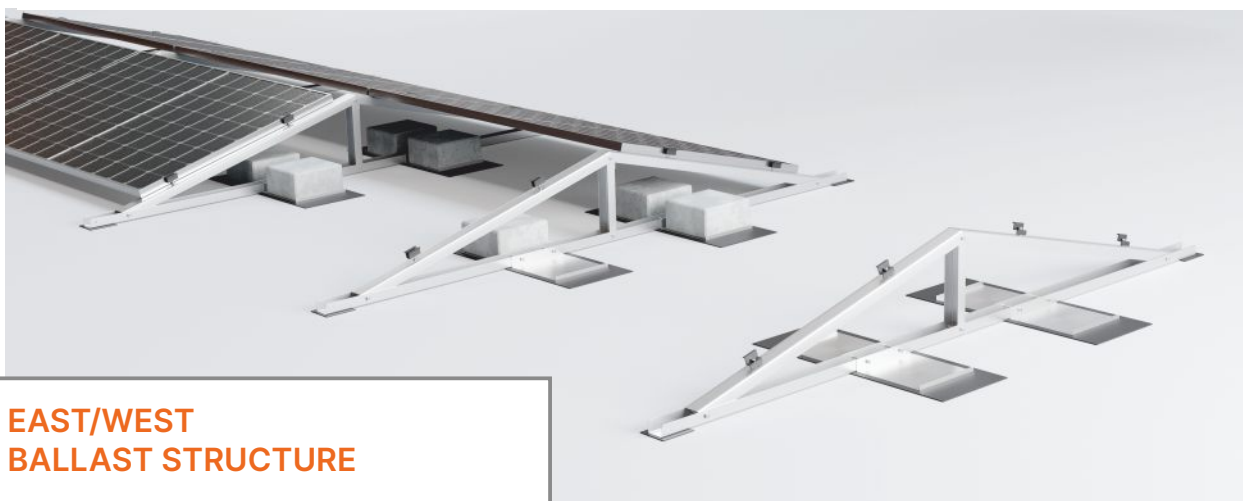
- ▶ Modules: from 2
- ▶ TÜV Certificate



**EAST/WEST  
BITUMEN/MEMBRANE**



**EAST/WEST  
DUAL THREAD SCREW**



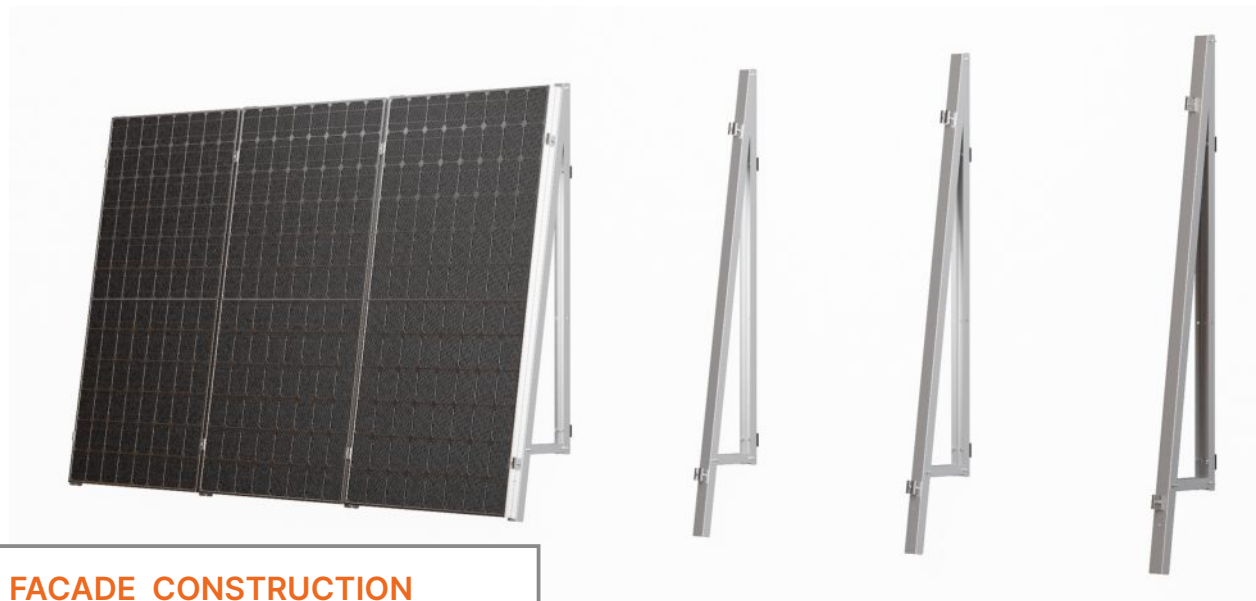
**EAST/WEST  
BALLAST STRUCTURE**



**STRUCTURE PARALLEL TO THE ROOF  
SCREW WITH PRESSURE**



**BALCONY STRUCTURE  
MAGNELIS TRIANGLE 15°**



**FACADE CONSTRUCTION  
MAGNELIS TRIANGLE 8°**



**CONSTRUCTION FOR FACADE MOUNTING, VERTICAL**



**CONSTRUCTION FOR FACADE MOUNTING, HORIZONTAL**



**PHOTOVOLTAIC FENCE 1 PANEL VERTICALLY, BIFACIAL**



**PHOTOVOLTAIC FENCE 2 PANELS HORIZONTALLY, BIFACIAL**



**FREE-STANDING CONSTRUCTION FOR INVERTER MOUNTING**

FREE STANDING  
STRUCTURES

# DOUBLE SUPPORT



STEEL/MAGNELIS  
STRUCTURE



**2 PANELS  
VERTICALLY**

- ▶ Modules from: 2
- ▶ TÜV Certificate



**4 PANELS  
HORIZONTALLY**

- ▶ Modules from: 4
- ▶ TÜV Certificate



**2 PANELS VERTICALLY  
EAST/WEST**

- ▶ Modules from: 4
- ▶ TÜV Certificate

Free-standing structures, due to their foundation in the ground, require exceptional refinement of all components. Depending on the needs, single and double-support structures are available.



**STEEL/ALUMINIUM  
STRUCTURE**



**2 PANELS  
VERTICALLY**

- ▶ Modules from: 2
- ▶ TÜV Certificate



**3 PANELS  
HORIZONTALLY**

- ▶ Modules from: 3
- ▶ TÜV Certificate



**4 PANELS  
HORIZONTALLY**

- ▶ Modules from: 4
- ▶ TÜV Certificate



**5 PANELS  
HORIZONTALLY**

- ▶ Modules from: 5
- ▶ TÜV Certificate

Free-standing structures, due to their foundation in the ground, require exceptional refinement of all components. Depending on the needs, single and double-support structures are available.



**STEEL/MAGNELIS  
STRUCTURE**



**2 PANELS  
VERTICALLY  
BIFACIAL**

- ▶ Modules from: 2
- ▶ TÜV Certificate



**3 PANELS  
HORIZONTALLY**

- ▶ Modules from: 3
- ▶ TÜV Certificate



**3 PANELS  
HORIZONTALLY  
BIFACIAL**

- ▶ Modules from: 3
- ▶ TÜV Certificate

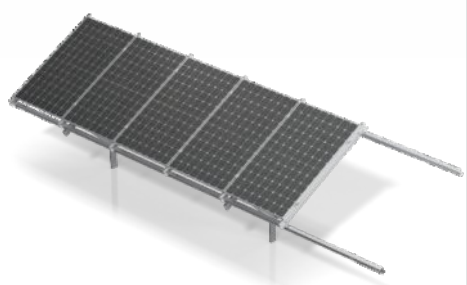


**4 PANELS  
HORIZONTALLY  
BIFACIAL**

- ▶ Modules from: 4
- ▶ TÜV Certificate

FREE STANDING  
STRUCTURES

# SINGLE SUPPORT



### 1 PANEL VERTICALLY

- ▶ Modules from: 1
- ▶ TÜV Certificate



### 2 PANELS VERTICALLY

- ▶ Modules from: 2
- ▶ TÜV Certificate



### 3 PANELS HORIZONTALLY

- ▶ Modules from: 3
- ▶ TÜV Certificate

FREE STANDING  
STRUCTURES

# CARPORT



ALUMINIUM  
STRUCTURE

module heavier >25 kg

STEEL  
STRUCTURE



STEEL OR  
ALUMINIUM  
CONSTRUCTION



MODULAR  
SYSTEM  
DESIGN



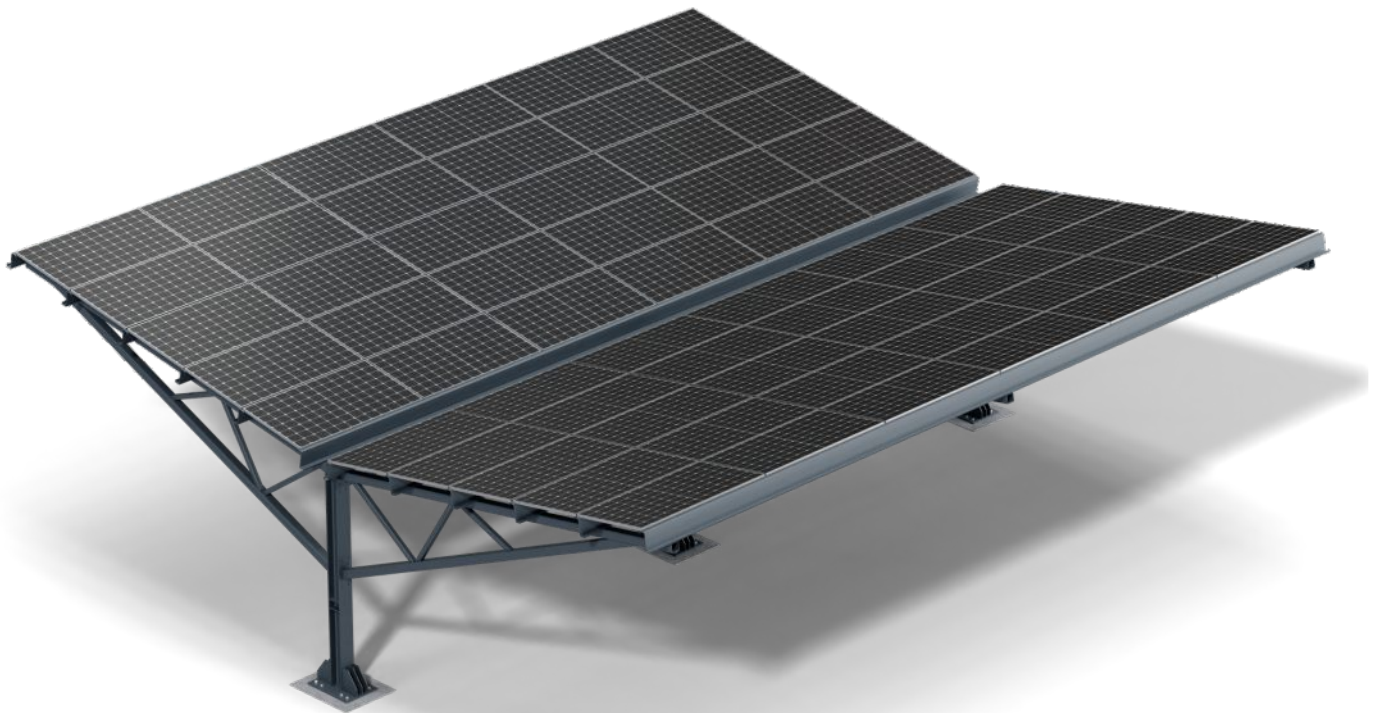
CHOOSE ANY  
FROM THE RAL  
COLOUR CHART

In our offer you will find aluminium and steel carports. Single and double space carport modules that can be joined together.

Single carport is 2.5 m wide (according to current requirements).


















It is possible to make the Carport according to individual customer requirements and to paint it in any colour from the "RAL" colour chart.





# ASSEMBLY ELEMENTS FOR MOUNTING STRUCTURES

As a manufacturer of mounting structures, we supply proven solutions for every type of roof with any type of covering. We focus on the quality and durability of all construction elements.

<p>W&amp;H Sp. z o. o.</p> <p><b>ALLEN BOLT</b></p>  <p> ▶ M8x20 ▶ M8x25 ▶ M8x30 ▶ M8x35</p>	<p>W&amp;H Sp. z o. o.</p> <p><b>HEX HEAD BOLT</b></p>  <p> ▶ M10x25</p>	<p>W&amp;H Sp. z o. o.</p> <p><b>HAMMER HEAD BOLT</b></p>  <p> ▶ M10x25 ▶ M10x30</p>
<p>W&amp;H Sp. z o. o.</p> <p><b>CARRIGE BOLT</b></p>  <p> ▶ M10x25</p>	<p>W&amp;H Sp. z o. o.</p> <p><b>DUAL THREAD SCREW</b></p>  <p> ▶ M10x200 A2 Set ▶ M10x250 A2 Set ▶ M10x300 A2 Set</p>	<p>W&amp;H Sp. z o. o.</p> <p><b>FLANGE NUT</b></p>  <p> ▶ M10</p>
<p>W&amp;H Sp. z o. o.</p> <p><b>ROMBOIDAL WASHER</b></p>  <p> ▶ M8</p>	<p>W&amp;H Sp. z o. o.</p> <p><b>FARMER SCREW</b></p>  <p> ▶ 4,8x55</p>	<p>W&amp;H Sp. z o. o.</p> <p><b>SELF TAPPING SCREW</b></p>  <p> ▶ 5,5x25 EPDM</p>

W&H Sp. z o. o.

**ZINC COATED SELF TAPPING SCREW**



▶ 8x50, 6x60, 6x100

W&H Sp. z o. o.

**SLIDING SLOT WITH A BALL**



▶ M8

W&H Sp. z o. o.

**GROUNDING PLATE**



▶ inox

W&H Sp. z o. o.

**MIDDLE CLAMP**



▶ silver / black

W&H Sp. z o. o.

**END CLAMP**



▶ 30, 32, 35, 40  
▶ silver / black

W&H Sp. z o. o.

**MOUNTING ADAPTER**



▶ steel: 30x5  
▶ aluminium: 30x5, 40x5

W&H Sp. z o. o.

**MOUNTING PROFILE CONNECTOR**



▶ 40x40, 80x40

W&H Sp. z o. o.

**END CAP 40X40**



▶ silver / black

W&H Sp. z o. o.

**END CAP 80X40**



▶ silver / black

W&H Sp. z o. o.

**DRIVEN CUP**



▶ black

W&H Sp. z o. o.

**T40 TRAPEZOIDAL BRIDGE**



▶ T40 330mm EPDM  
▶ T40 400mm EPDM  
▶ T40 470mm EPDM

W&H Sp. z o. o.

**T70 TRAPEZOIDAL BRIDGE**



▶ T70 330mm EPDM  
▶ T70 400mm EPDM  
▶ T70 470mm EPDM

W&H Sp. z o. o.

**PITCHED TRAPEZOIDAL T70 BRIDGE**



▶ 330mm

W&H Sp. z o. o.

**T40 MAGNELIS TRAPEZOIDAL BRIDGE**



- ▶ T40 330mm EPDM
- ▶ T40 400mm EPDM
- ▶ T40 470mm EPDM

W&H Sp. z o. o.

**T70 MAGNELIS TRAPEZOIDAL BRIDGE**



- ▶ T70 330mm EPDM
- ▶ T70 400mm EPDM
- ▶ T70 470mm EPDM

W&H Sp. z o. o.

**SINGLE-SIDED BRIDGE CLICK SYSTEM**



W&H Sp. z o. o.

**DOUBLE-SIDED BRIDGE CLICK SYSTEM**



W&H Sp. z o. o.

**END CLAMPS CLICK SYSTEM**



W&H Sp. z o. o.

**MIDDLE CLAMPS CLICK SYSTEM**



W&H Sp. z o. o.

**HEX HEAD BOLT ALUMINIUM PROFILE**



▶ 40X40 hex head bolt

W&H Sp. z o. o.

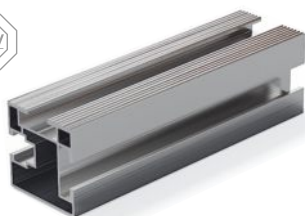
**HAMMER HEAD BOLT ALUMINIUM PROFILE**



▶ 40X40 hammer head bolt

W&H Sp. z o. o.

**„ENGLISH” ALUMINIUM PROFILE**



▶ 40X40

W&H Sp. z o. o.

**STANDING SEAM BRACKET**



▶ UBR

W&H Sp. z o. o.

**SPACER EPDM**



W&H Sp. z o. o.

**METAL ROOFING TILE „JANOSIK”, ADJUSTABLE CLAMP**



▶ ULR175

W&H Sp. z o. o.

**ADJUSTABLE L CLAMP**



▶ ULR175

W&H Sp. z o. o.

**NON ADJUSTABLE L CLAMP**



▶ ULN175

W&H Sp. z o. o.

**ADJUSTABLE S CLAMP**



▶ USR420, USR450, USR480, USR500  
▶ USR520, USR550, USR570, USR600

W&H Sp. z o. o.

**NON ADJUSTABLE S CLAMP**



▶ USN460, USN470, USN480, USN500  
▶ USN520, USN550, USN560

W&H Sp. z o. o.

**ADJUSTABLE CLAMP FOR METAL ROOFING TILE**



▶ UDB350, UDB400

W&H Sp. z o. o.

**ADJUSTABLE CLAMP FOR PLAIN ROOFING TILE**



▶ UKR305

W&H Sp. z o. o.

**NON ADJUSTABLE CLAMP FOR PLAIN ROOFING TILE**



▶ UKN305

W&H Sp. z o. o.

**WIDE PLAIN ROOF CLAMP**



▶ 300mm

W&H Sp. z o. o.

**DUBLE ADJUSTABLE RAFTER CLAMP I**



▶ 140mm Vario I

W&H Sp. z o. o.

**DUBLE ADJUSTABLE RAFTER CLAMP II**



▶ 140mm Vario II

W&H Sp. z o. o.

**DUBLE ADJUSTABLE RAFTER CLAMP III**



▶ 140mm Vario III

W&H Sp. z o. o.

**„ENGLISH” PROFILE  
RAFTER CLAMP**



▶ 140mm Vario IV

W&H Sp. z o. o.

**SMALL TRIANGLE  
MOUNT**



▶ Horizontal module orientation 15° 25°

W&H Sp. z o. o.

**LARGE TRIANGLE  
MOUNT**



▶ Vertical module orientation 15° 25°

W&H Sp. z o. o.

**ADJUSTABLE LARGE  
TRIANGLE MOUNT**



▶ Vertical module orientation

W&H Sp. z o. o.

**MAGNELIS TRIANGLE  
ADJUSTABLE  
SOUTH 15/20°**



▶ Horizontal module orientation 15° 20°

W&H Sp. z o. o.

**MAGNELIS TRIANGLE  
EAST/WEST 15°**



▶ Horizontal module orientation 15°

W&H Sp. z o. o.

**MAGNELIS TRIANGLE  
MODULAR SOUTH 15°**



▶ Horizontal module orientation 15°

W&H Sp. z o. o.

**WIDE MAGNELIS  
TRIANGLE MOUNT**



▶ Horizontal module orientation 15° 20°

W&H Sp. z o. o.

**MOUNTING PLATE**



▶ 300x225x1,5mm

W&H Sp. z o. o.

**SCREW WITH  
PRESSURE PLATE  
ON AN EPDM PAD**



▶ fi 80mm

W&H Sp. z o. o.

**LARGE AND SMALL  
HEAT PUMP STAND**



length:	width:	height:
735, 1200	430	430
480, 780	430	430

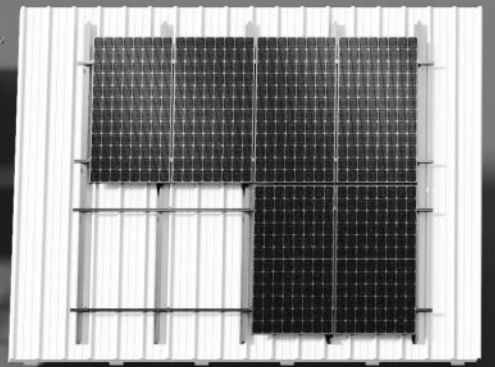
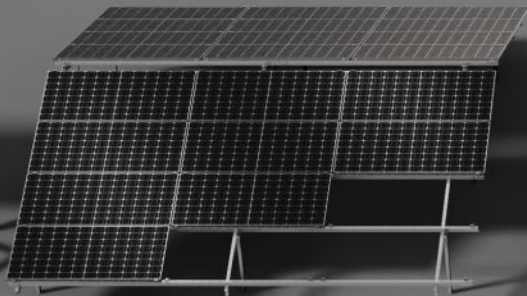
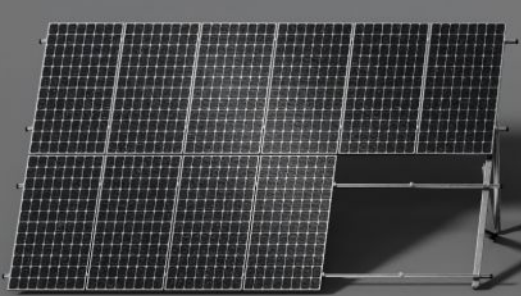
W&H Sp. z o. o.

**INVERTER  
STANDING  
SUPPORT**



length:	height:
1485, 2000	3000





📍 **W&H Sp. z o.o.**

ul. Kościuszki 49,  
44-351 Turza Śląska,  
Poland

☎ +48 791 730 721

✉ oferta@hetmaniok.pl

hetmaniok.pl

